

**Exam Number/Code:**C2060-218

**Exam Name:** IBM Sterling B2B  
Integrator V5.2, Solution  
Implementation

**Version:** Demo

QUESTION: 1

A company has set up an adapter Container JVM to increase performance and reliability. Which three server adapters are available to be used with the container? (Choose three.)

- A. Connect:Direct
- B. FTP
- C. HTTPS
- D. JMS
- E. OFTP
- F. SMTP

Answer: A,B,C

QUESTION: 2

A customer has deployed a two node active-active IBM Sterling B2B Integrator (SBI) cluster in the secure zone on two servers. The customer has installed two servers in the DMZ for the purpose of installing remote SBI Perimeter Servers to facilitate communications with external partners. External partners will connect to an external IP Load Balancer that will distribute inbound FTP/S, SFTP and HTTP Client sessions across the Perimeter Servers.

The customer requirement is that if any single server fails, all the other SBI nodes and remote Perimeter Server instances must continue to actively handle inbound sessions for each protocol. The customer's requirement is that if any single server fails, all the other SBI nodes and remote Perimeter Server instances must continue to actively handle inbound sessions for each protocol.

What is the minimum number of remote Perimeter Server instances that must be deployed in the DMZ?

- A. 2
- B. 3
- C. 4
- D. 12

Answer: C

QUESTION: 3

A developer has created a Business Process (BP) that uses the File System Adapter to

write a file to the file system. Where should the targetfile name be stored in the BP so that the File System Adapter can retrieve it?

- A. Primary Data
- B. Process Data
- C. Primary Document
- D. Process Document

Answer: B

QUESTION: 4

What would cause the IBM Sterling B2B Integrator (SBI) database size to continually grow and thus impact performance?

- A. persistence level set to FULL
- B. improperly sized database connection pools
- C. index, archive, and purge services not running
- D. incorrect number of database threads assigned

Answer: C

QUESTION: 5

ABusiness Process (BP) implementer wants to use the Document Keyword Replace Service in the Graphical Process Modeler (GPM) but the service is not showing in the All Services stencil. What needs to be done to make the Document Keyword Replace Service show in the GPM?

- A. Update the license file.
- B. Create a service configuration.
- C. Execute `install3rdParty.sh/.cmd`.
- D. Add `JavaTask` to `adapters.properties`.

Answer: B

QUESTION: 6

A company wants to change their document storage to file system storage for aIBM Sterling B2B Integrator (SBI) cluster deployment. Which configuration needs to exist?

- A. with a shared file system mounted as /FS:  
document\_dir.jdbc.properties=/shared  
defaultDocumentStorageType.jdbc.properties=FS
- B. with a shared file system mounted as /FS:  
document\_dir.jdbc.properties=/FS  
defaultDocumentStorageType.jdbc.properties=shared
- C. with a shared file system mounted as /shared:  
document\_dir.jdbc.properties=/FS  
defaultDocumentStorageType.jdbc.properties=FS
- D. with a shared file system mounted as /shared:  
document\_dir.jdbc.properties=/shared  
defaultDocumentStorageType.jdbc.properties=FS

Answer: D

#### QUESTION: 7

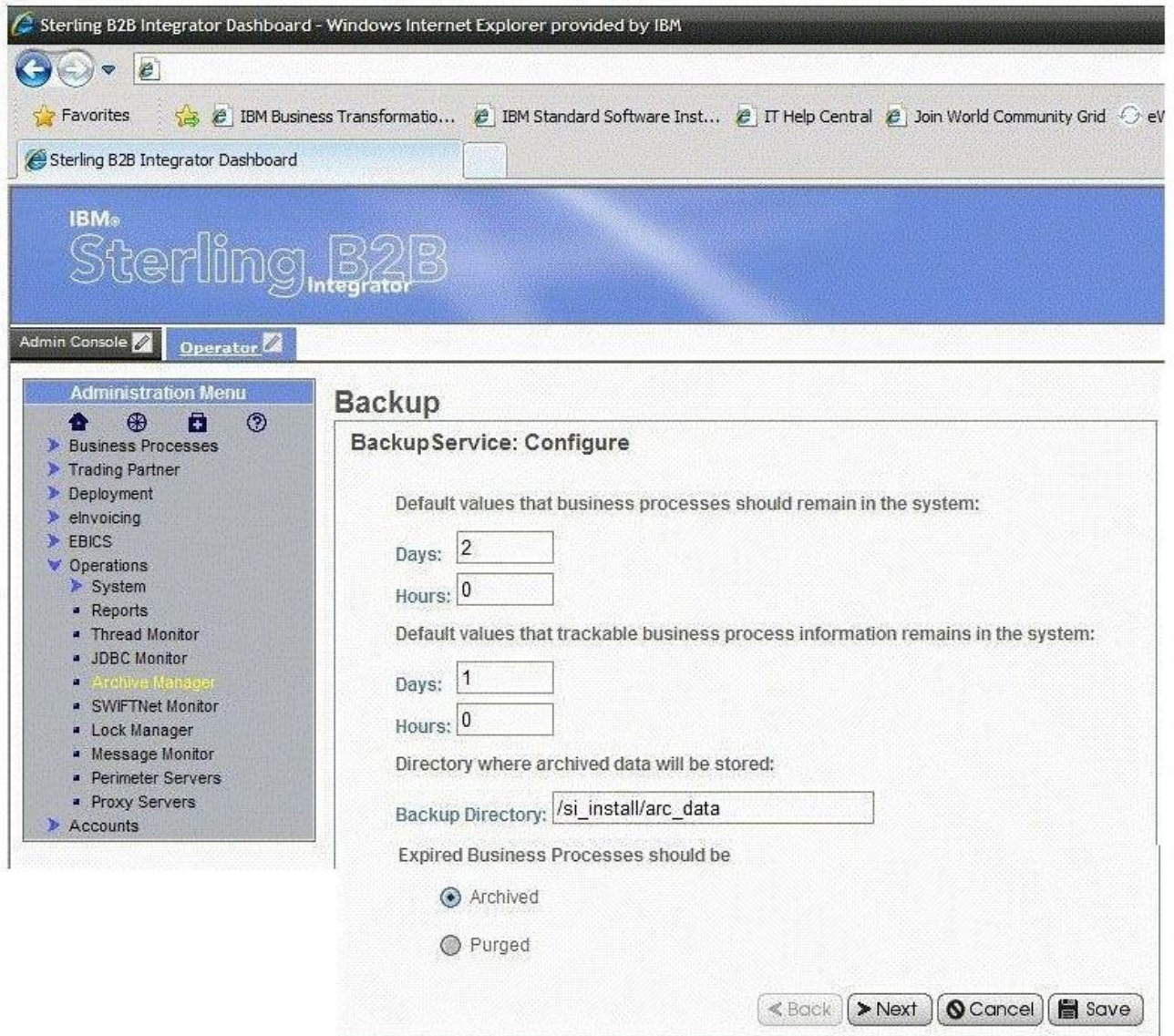
The system default for the amount of time a Business Process (BP) remains online in the system is set to five days. How can that value be overridden?

- A. Update noapp.properties.
- B. Modify the lifespan setting for a BP.
- C. Update with the Performance Tuning wizard.
- D. Create a new Retention Service configuration.

Answer: B

#### QUESTION: 8

Based on the screen shot,



how many days will documents and other trackable data stay in the system by default?

- A. 1 dayA.1 day
- B. 2 daysB.2 days
- C. 3 daysC.3 days
- D. The setting is controlled at the individual Business Process (BP) level.

Answer: C

QUESTION: 9

Given the following information from the servers.properties file:

noapp=/home/SBI/properties/noapp.properties  
jboss=/home/SBI/properties/noapp.properties  
jdbcService=/home/SBI/properties/jdbc.properties  
jdbcServiceCustomer=/home/SBI/properties/jdbc\_customer.properties  
si\_config=/home/SBI/properties/sandbox.cfg  
customer\_overrides=/home/SBI/properties/customer\_overrides.properties  
filesystem=/home/SBI/properties/filesystem.properties

The customer would like to change the default directory to store on-disk documents to a new directory. How should this override be configured in the system?

- A. Edit sandbox.cfg and add document\_dir=<new directory full path>.
- B. Edit filesystem.properties and add filesystem.document\_dir=<new directory full path>.
- C. Edit customer\_overrides.properties and add jdbcService.document\_dir=<new directory full path>.
- D. Edit jdbc\_customer.properties and add jdbcServiceCustomer.document\_dir=<new directory full path>.

Answer: C

QUESTION: 10

Of the locations where persistence levels can be set, which has the highest precedence?

- A. Global
- B. System
- C. Trading Partner
- D. Business Process (BP) Definition

Answer: D