

Exam Number/Code: 74-697

Exam Name: OEM Preinstallation

Version: Demo

QUESTION 1

Which statement correctly describes the functionality of the Windows 8 version of Reagentc?

- A. Reagentc can be used to service an online image and an offline image.
- B. Reagentc can be used to service an online image only.
- C. Reagentc can be used to service an offline image only.
- D. Reagentc can be used from Windows Preinstallation Environment (Windows PE) only.

Answer: A

Explanation: REAgentC.exe is used for deploying custom Windows Recovery Environment (Windows RE) as well as for enabling image recovery solutions. You can run the REAgentC command on an offline Windows image or on a running Windows operating system.

QUESTION 2

Your customer places an order for 20 new client computers that have Windows 8 preinstalled.

The customer plans to amortize the licensing costs over three years.

You need to recommend a licensing solution to minimize the initial licensing costs.

Which type of license should you recommend?

- A. Open Value Subscription
- B. Open Value
- C. Full Packaged Product (FPP)
- D. Open License with Software Assurance

Answer: A

Explanation: Open Value is the recommended program if you have a small to midsize organization with five or more desktop PCs and want to simplify license management, manage software costs, and get better control over your investment.

QUESTION 3

DRAG DROP

You are preparing a GPT disk for a Unified Extensible Firmware Interface (UEFI)-based computer from Windows Preinstallation Environment (Windows PE).

You need to identify which file system must be used for the EFI system partition, the MSR partition, and the Windows partition.

What should you identify? (To answer, drag the appropriate actions to the correct partitions. Each action may be used once, more than once, or not at all. You may need to drag the split bar between panes or scroll to view content.)

| Actions | Answer Area |
|----------------------------------|------------------------------|
| Format the partition as NTFS. | EFI System Partition: Action |
| Format the partition as FAT32. | MSR Partition: Action |
| Leave the partition unformatted. | Windows Partition: Action |

Answer:

| Actions | Answer Area |
|----------------------------------|--|
| Format the partition as NTFS. | EFI System Partition: Format the partition as FAT32. |
| Format the partition as FAT32. | MSR Partition: Leave the partition unformatted. |
| Leave the partition unformatted. | Windows Partition: Format the partition as NTFS. |

QUESTION 4

You create a Windows 8 image named Custom.wim.

You deploy the image to several client computers.

You need to ensure that Custom.wim can be used when a user launches a restore process from the Windows recovery tools.

How should you rename Custom.wim before you copy the image to the restore partition?

- A. Install.wim
- B. Boot.wim
- C. Winpe.wim
- D. Winre.wim

Answer: A

Explanation: WIM images can be made bootable. Windows boot loader supports booting Windows from within a WIM file. Windows Setup DVD in Windows Vista and later use such WIM files. In this case, BOOT.WIM contains a bootable version of Windows PE from which the installation is performed. Other setup files are held in the INSTALL.WIM.

QUESTION 5

You have the Windows Assessment and Deployment Kit (Windows ADK) installed.

An administrator creates an answer file for an image.

You discover that when the image is deployed, the End-User License Agreement (EULA) is accepted automatically.

You need to ensure that when the image is deployed to a computer, the end-user accepts the EULA the first time the computer starts.

Which answer file component should you modify?

- A. Microsoft-Windows-Shell-Setup\OOBE
- B. Microsoft-Windows-Deployment\Reseal
- C. Microsoft-Windows-Setup\UserData
- D. Microsoft-Windows-Deployment\Generalize

Answer: C

Explanation: AcceptEula specifies whether to automatically accept the Microsoft Software License Terms.

Parent Hierarchy

Microsoft-Windows-Setup | UserData | AcceptEula

QUESTION 6

Your company is introducing a new line of computers.

All of the computers use Unified Extensible Firmware Interface (UEFI).

You need to create a partition that includes the Windows Recovery Environment (Windows RE).

Which two actions should you perform? (Each correct answer presents part of the

solution.

Choose two.)

- A. Set the partition Type to Primary.
- B. Set the partition Type to EFI.
- C. Set the partition TypeID to 0x27.
- D. Set the partition TypeID to de94bba4-06d1-4d40-a16a-bfd50179d6ac
- E. Set the partition Type to MSR.
- F. Set the partition TypeID to 0x07.

Answer: A,D

Explanation: * rem == 1. Windows RE tools partition ===== create partition
primary size=300
format quick fs=ntfs label="Windows RE tools"
assign letter="T"
set id="de94bba4-06d1-4d40-a16a-bfd50179d6ac"
gpt attributes=0x8000000000000001

Note:

* The Unified Extensible Firmware Interface (UEFI) is a specification that defines a software interface between an operating system and platform firmware. UEFI is meant to replace the Basic Input/Output System (BIOS) firmware interface, present in all IBM PC-compatible personal computers. In practice, most UEFI images provide legacy support for BIOS services. UEFI can support remote diagnostics and repair of computers, even without another operating system.

Reference: Sample: Configure UEFI/GPT-Based Hard Drive Partitions by Using Windows PE and DiskPart

QUESTION 7

You work for an OEM system builder.

A technician applies a generalized image of Windows 8 to a client computer, and then shuts down the computer.

You need to configure the computer for push-button reset.

What should you do first?

- A. Start the computer from Windows Preinstallation Environment (Windows PE), and then run sysprep.exe /oobe.
- B. Start the computer, and then complete the installation of Windows 8.

- C. Start the computer, and then shut down the computer when Windows Welcome appears.
- D. Start the computer from Windows Preinstallation Environment (Windows PE), and then run wbadm.exe.

Answer: C

Explanation: Step 0: Shut down the computer.

Step 1: Open the Deployment and Imaging Tools Environment Step 2: Get copies of the Windows image and the Windows RE image

Note: Windows Recovery Environment (Windows RE) includes push-button reset features that enable your users to repair their PCs quickly while preserving their data and important customizations. This can help you satisfy support obligations with faster average resolution times and fewer resources.

You can customize the push-button reset features by inserting custom scripts that can install apps or preserve additional data. This can help you eliminate or lower the development costs of custom recovery solutions.

Reference: Create Media to Run Push-Button Reset Features

QUESTION 8

You start a client computer by using Pre-Boot Execution Environment (PXE). You load a default version of Windows Preinstallation Environment (Windows PE) that was created by using the Windows Assessment and Deployment Kit (Windows ADK).

You have a file server that contains a shared folder. The folder contains an image of Windows 8. The folder is shared to the local Users group only.

The computer has a system partition and a Windows partition.

You need to apply a reference installation from a network share.

Which command should you run before applying the image?

- A. drvinst.exe
- B. wpeinit.exe
- C. mshta.exe
- D. net.exe

Answer: B

Explanation: Wpeinit is a command-line tool that initializes Windows PE each time it boots.

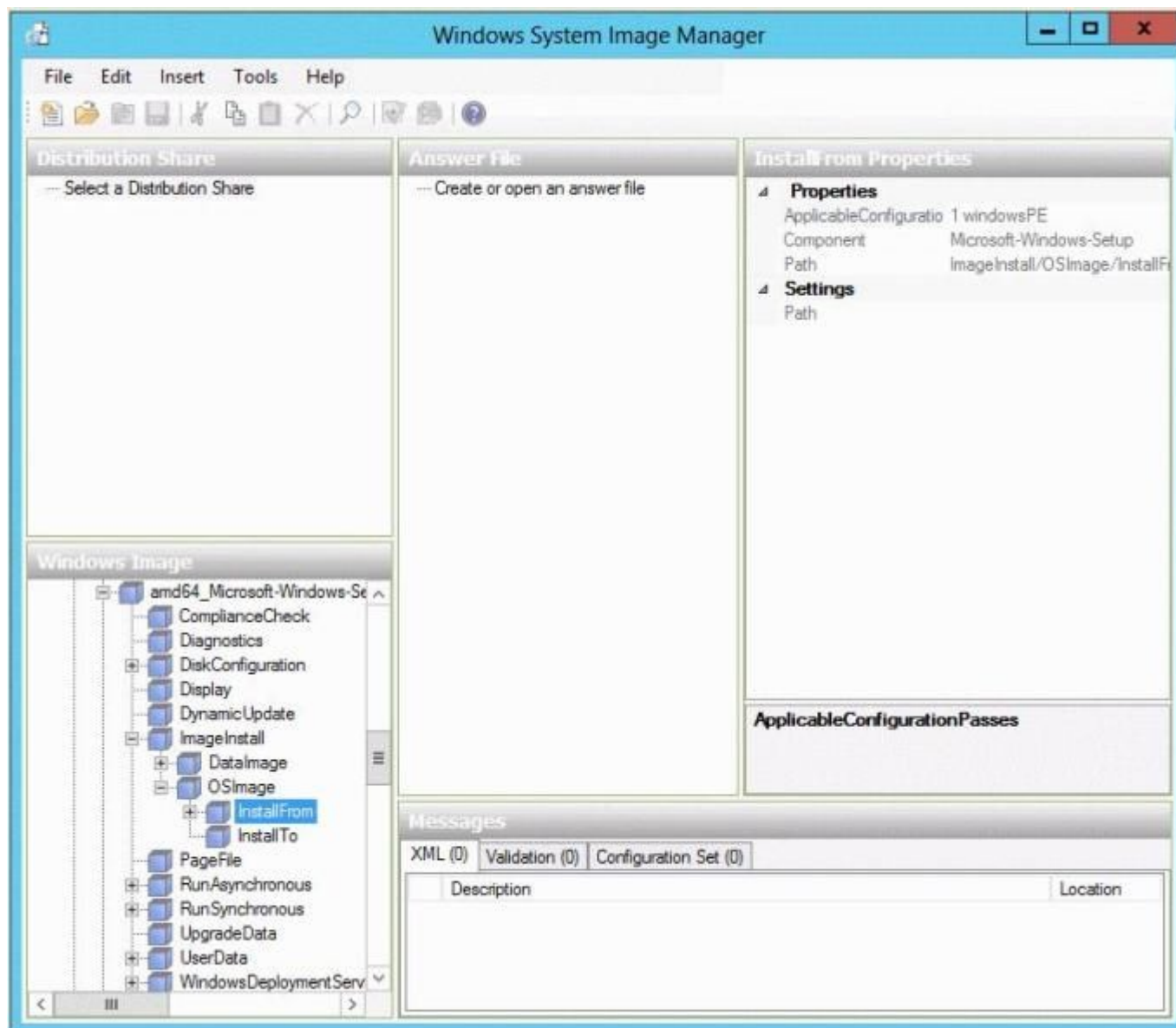
When Windows PE starts, Winpeshl.exe executes Startnet.cmd, which launches Wpeinit.exe. Wpeinit.exe specifically installs PnP devices, processes Unattend.xml settings, and loads network resources.

Incorrect:

Not D: Net.exe can be used to stop and start the IPv6 protocol.

QUESTION 9

A technician opens Windows System Image Manager as shown in the following exhibit.
(Click the Exhibit button.)



The technician fails to configure any component settings in Windows System Image Manager (Windows SIM).

You need to tell the technician what to do before modifying the component settings in Windows SIM.

What should you tell the technician to do?

- A. Create a distribution share.
- B. Copy a Windows 8 image to a different location.
- C. Create an answer file.
- D. Create a catalog file.

Answer: C

Explanation: Windows System Image Manager (Windows SIM) is the tool used to create unattended Windows Setup answer files. The creation of an answer file is achieved by using information from a Windows image (.wim) file and a catalog (.clg) file. Component settings are added to a configuration pass in the answer file. You can also add packages to be installed during Windows Setup.

QUESTION 10

You have a technician computer named Computer1 and a reference computer named Computer2.

You plan to customize the profile settings on Computer2 by logging on to Computer2.

You need to ensure that the current user profile is copied to the default user profile before the image of Computer2 is captured.

To which configuration pass in the unattended answer file should you add the CopyProfile settings?

- A. auditSystem
- B. offlineServicing
- C. auditUser
- D. windowsPE
- E. generalize
- F. oobeSystem
- G. specialize

Answer: G

Explanation: The CopyProfile unattend setting is processed only in the specialize phase of Windows Setup, so you must use Sysprep with the /generalize option.